

# New HIV diagnoses in Spain

Asuncion Diaz, Victoria Hernando, Marta Ruiz  
National Centre of Epidemiology  
Instituto de salud Carlos III (ISCIII)  
Madrid, September 2017

# Contents

- HIV surveillance system in Spain
- Epidemiological data, 2015
- Conclusions

# HIV surveillance system in Spain

Sentinel surveillance for HIV prevalence (STI/HIV clinics)

## STI surveillance:

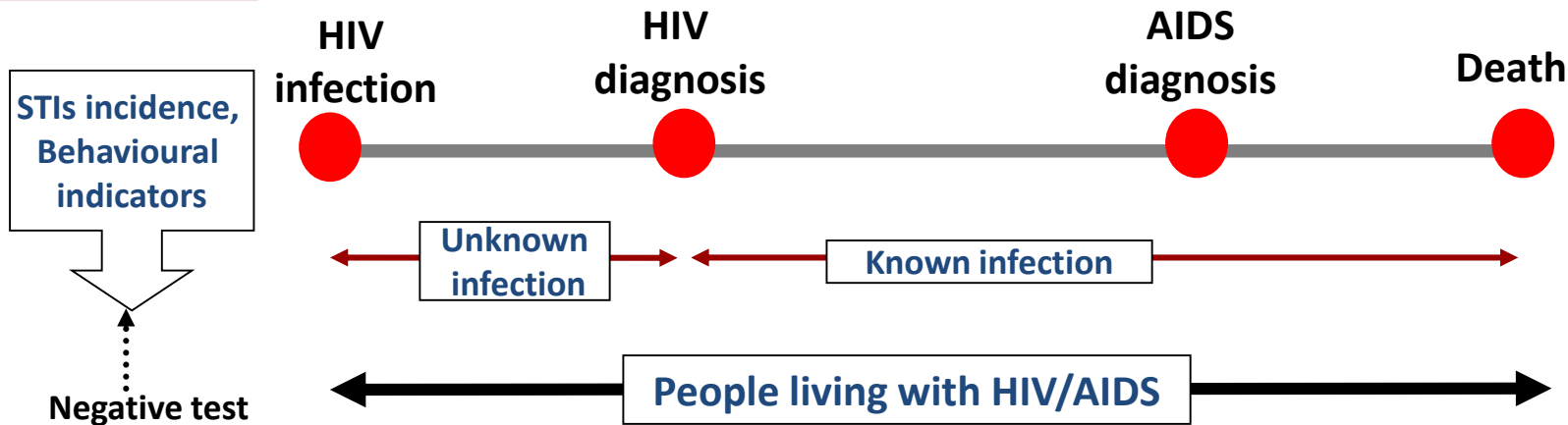
- Case notification (comprehensive)
- Sentinel surveillance (STI clinics)

## Case notification:

- AIDS cases
- New HIV diagnoses

## Mortality information:

- National statistics
- CoRis Cohort
- Mortality among inpatient HIV cases



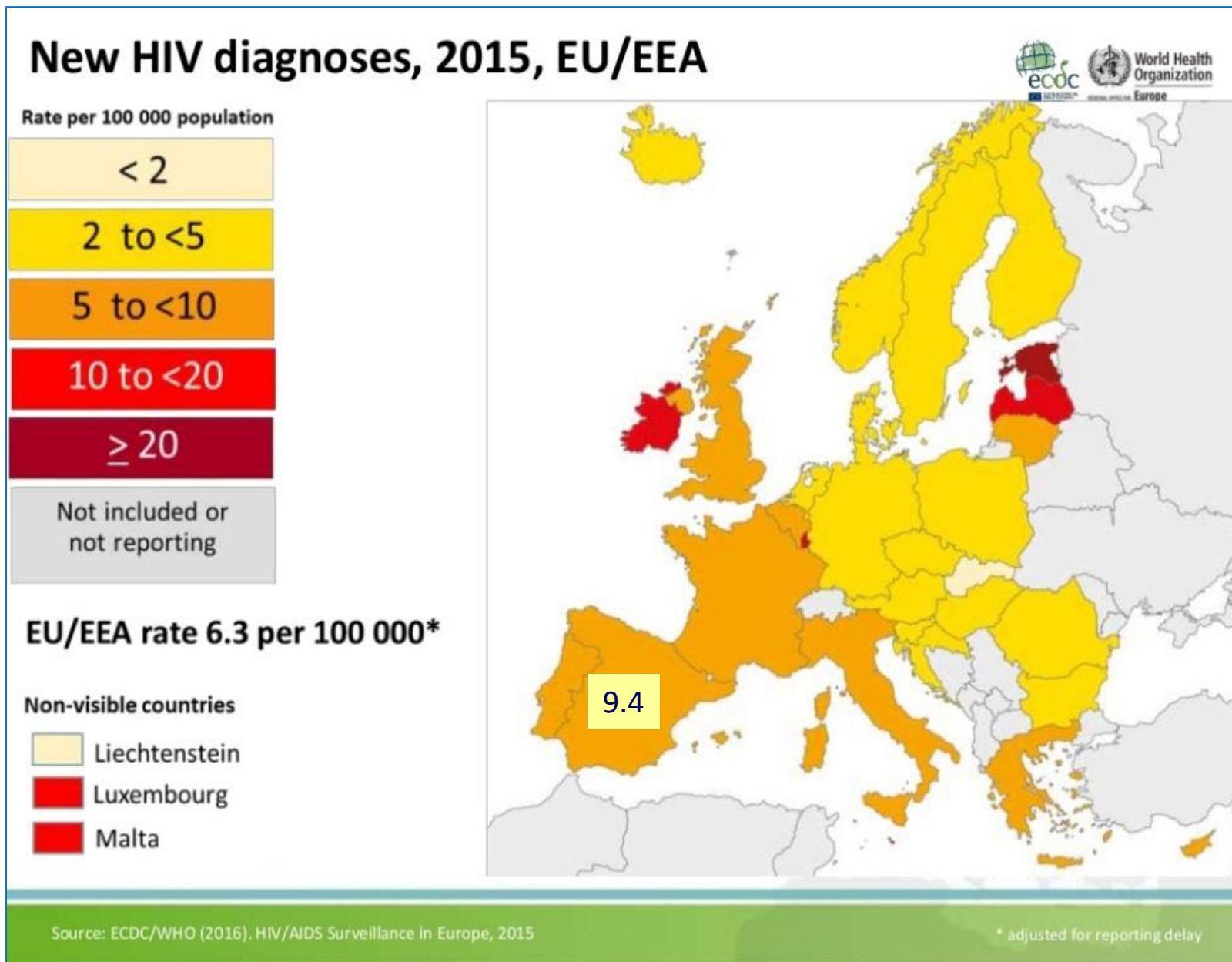
## Information on PLWHIV (hospital-based):

- Cross-sectional anual survey in public hospitals
- CoRis Cohort

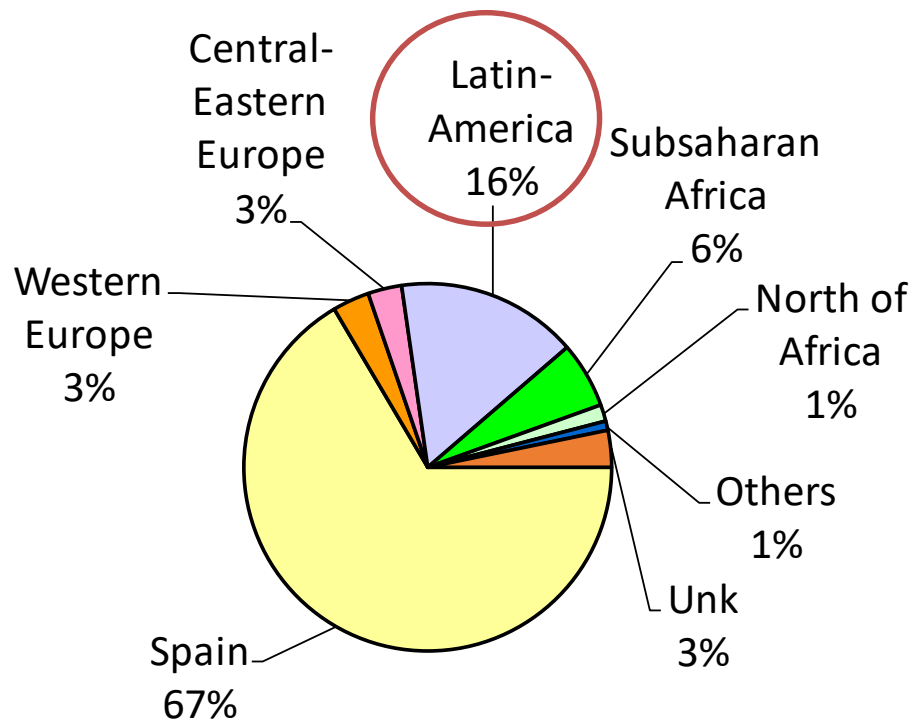
# New HIV diagnoses, 2015

Spain		EU/EEA
Number of new HIV diagnoses	3,428	29,747
Male/female ratio	6	3
% new HIV diagnoses 15-24 years	11.0%	10.8%
% new HIV diagnoses $\geq$ 50 years	14.0%	17.0%
<b>Transmission route(%)</b>		
MSM	53.6	42.2
Heterosexual	25.4	32.0
Injecting drug use	2.8	4.2
Other	0.5	1.4
Unknown	17.6	20.2

# Rates of new HIV diagnoses, 2015

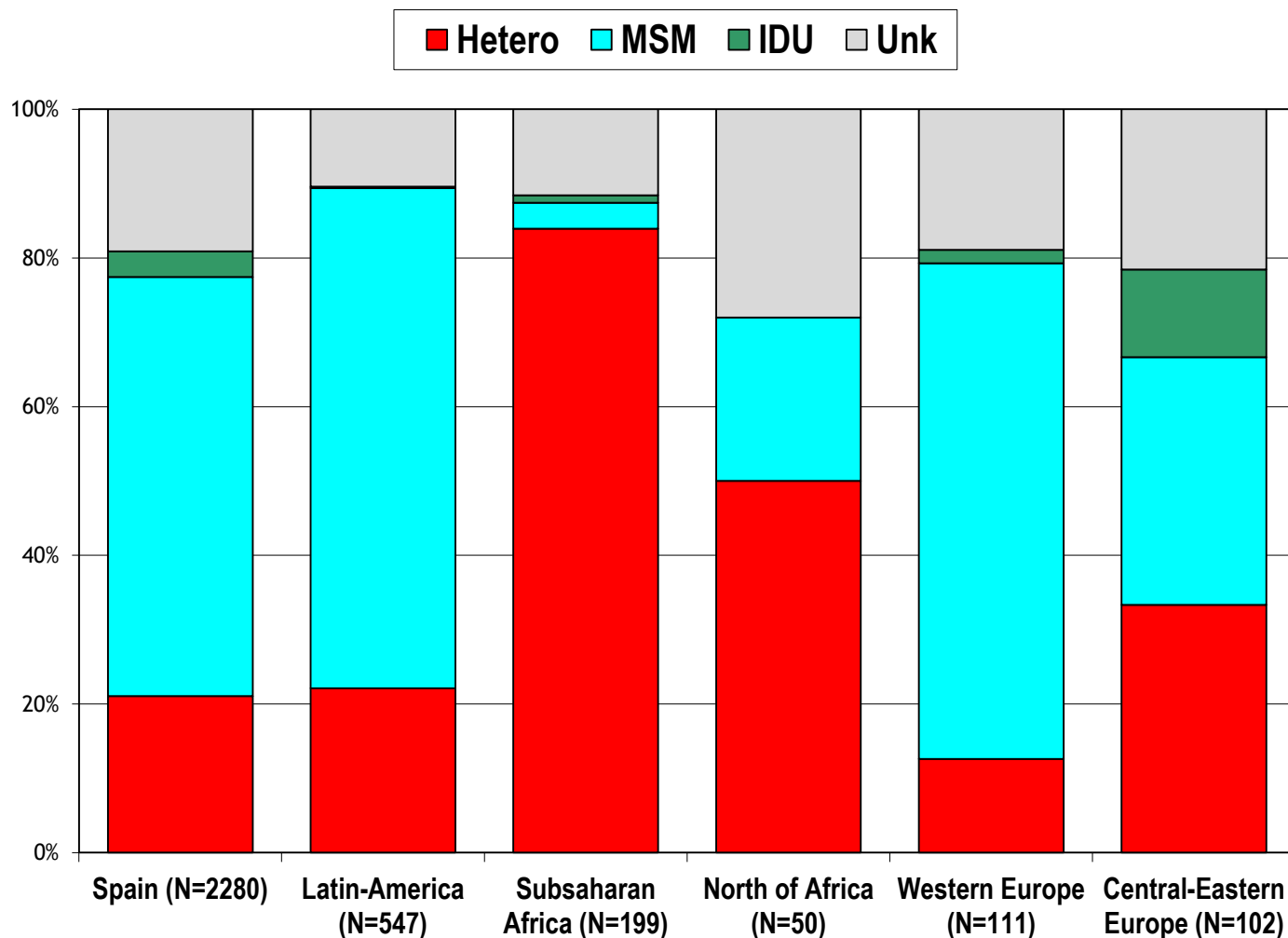


# New HIV diagnoses by region of birth. Spain, 2015

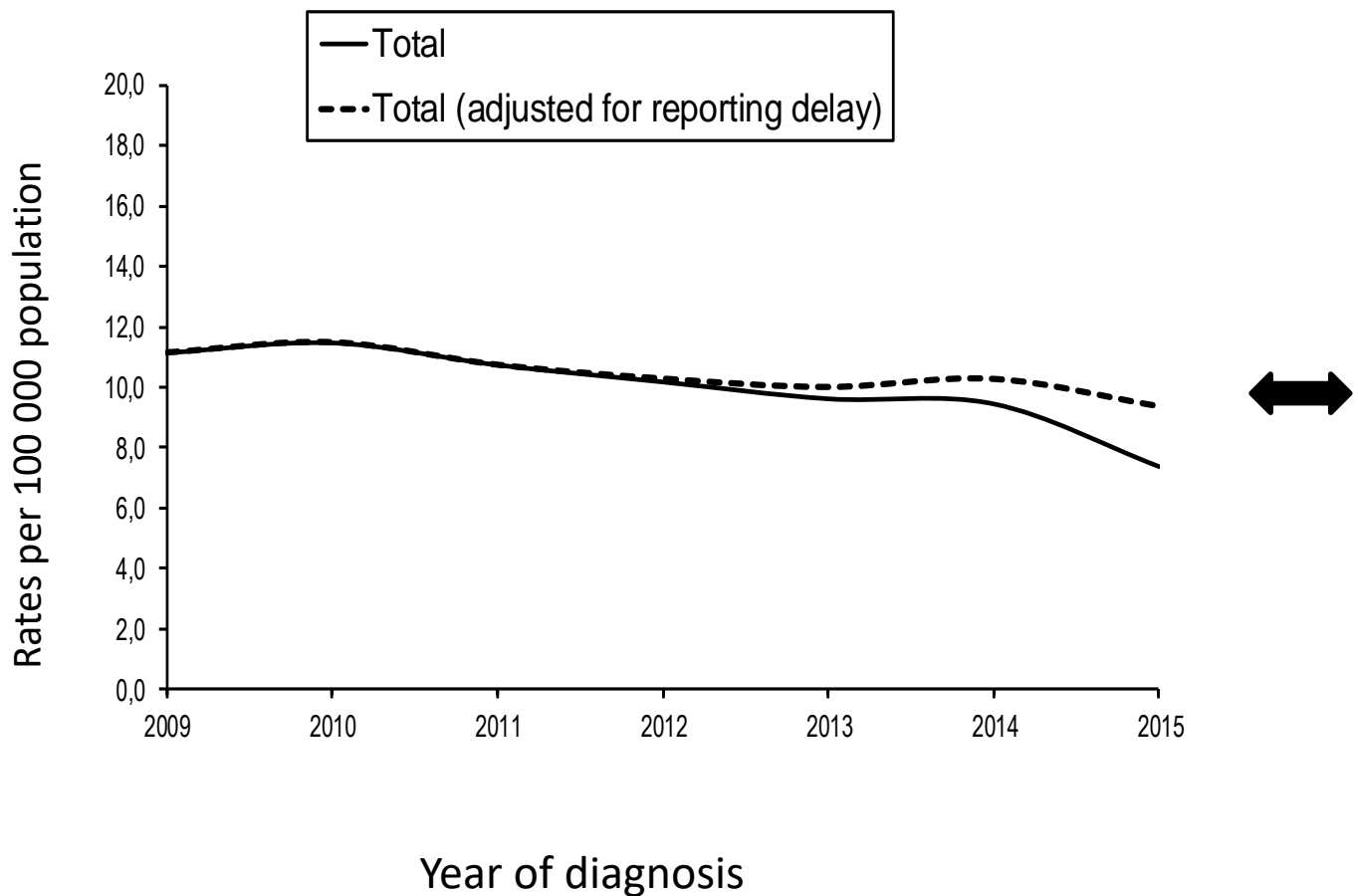


n = 3,428

# New HIV diagnoses by region of birth and transmission mode. Spain, 2015



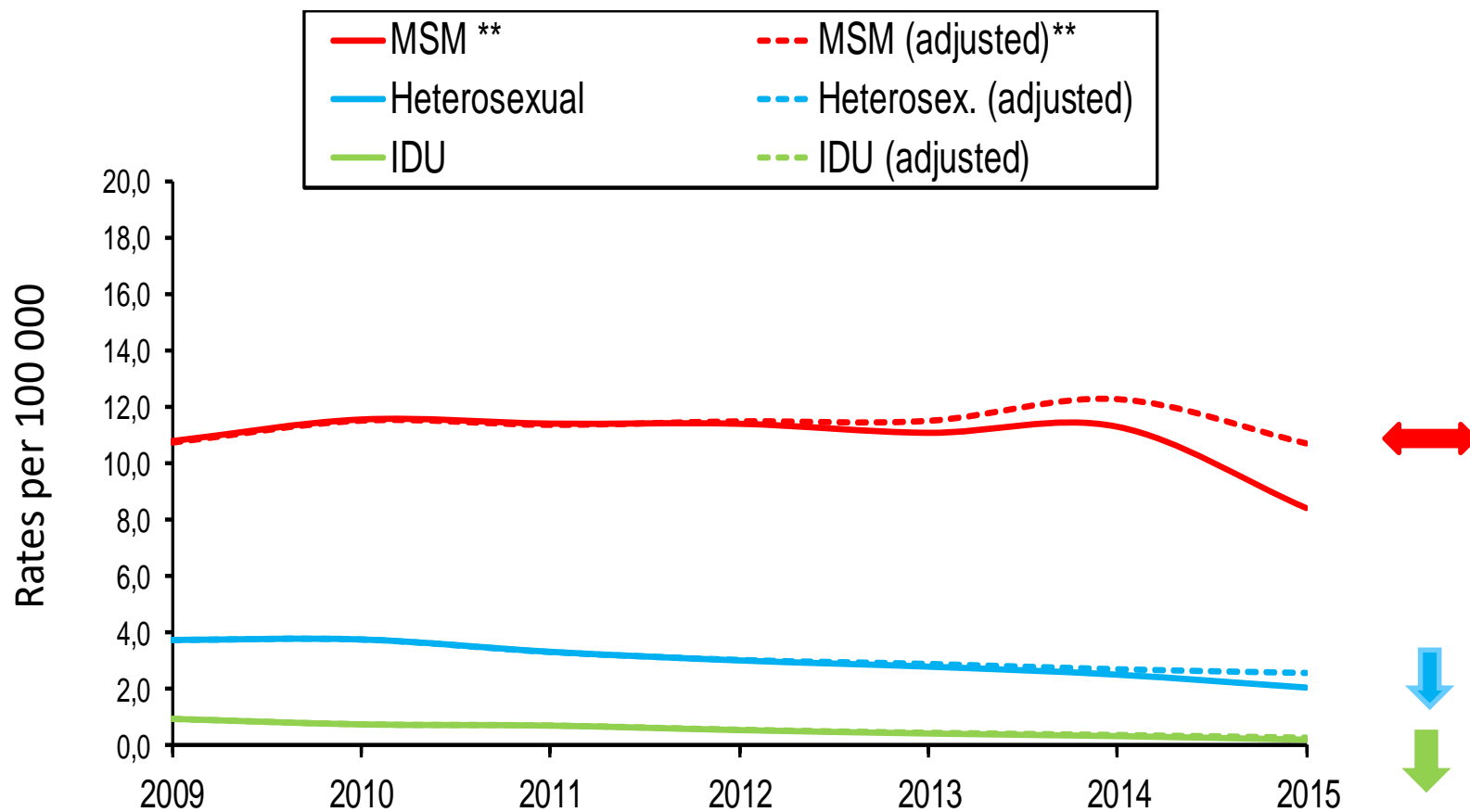
# Trends of new HIV diagnoses, 2009-2015



\*Data from 17 Autonomous Regions that reported data consistently between 2009-2015

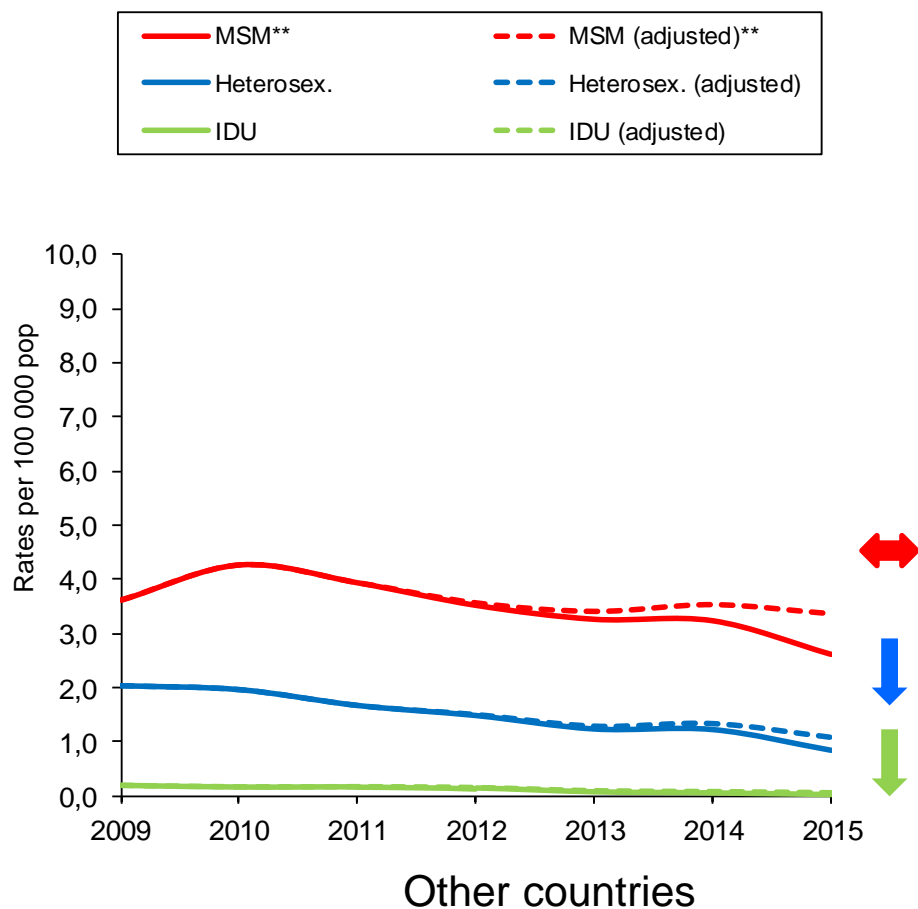
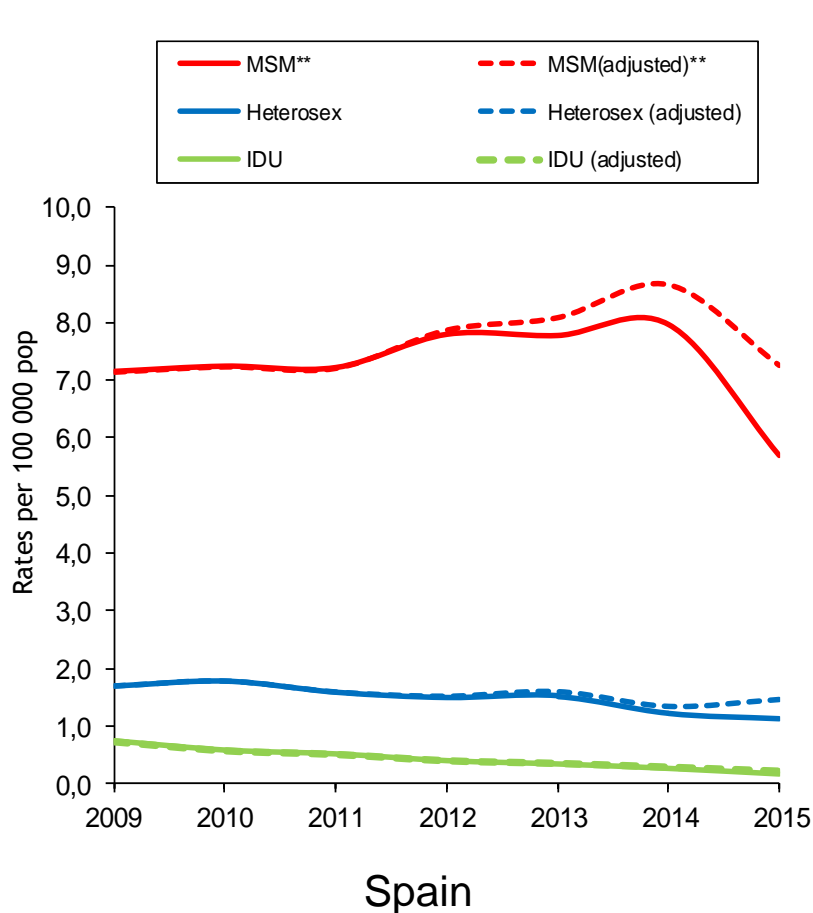


# Trends of new HIV diagnoses by transmission mode, 2009-2015



\*\*Rates per 100 000 males

# Trends of new HIV diagnoses by transmission mode and region of birth, 2009-2015

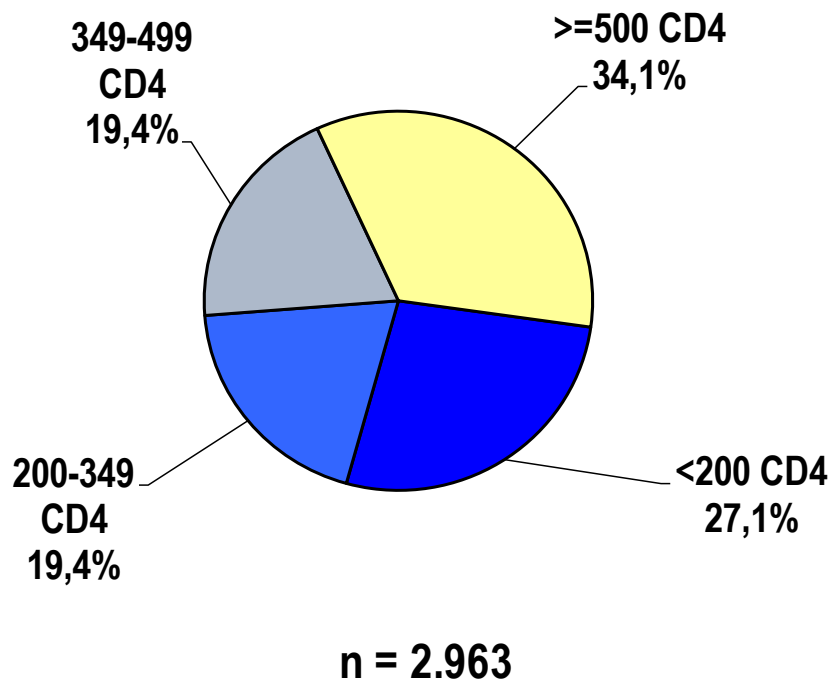


\*\*Rates per 100 000 males

\*Data from 17 Autonomous Regions

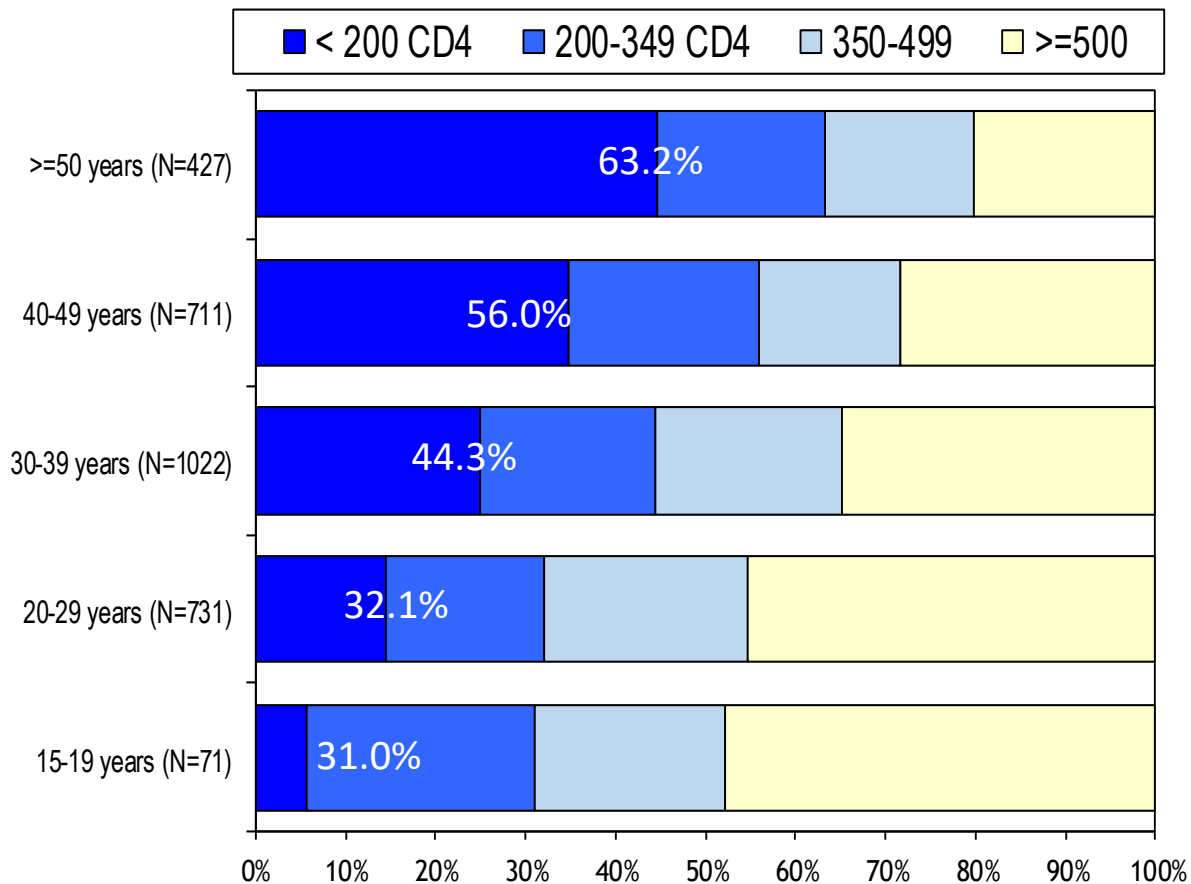
# Late presentation New HIV diagnoses. Spain, 2015

Median CD4 count: 378  
(IQR: 179-583)

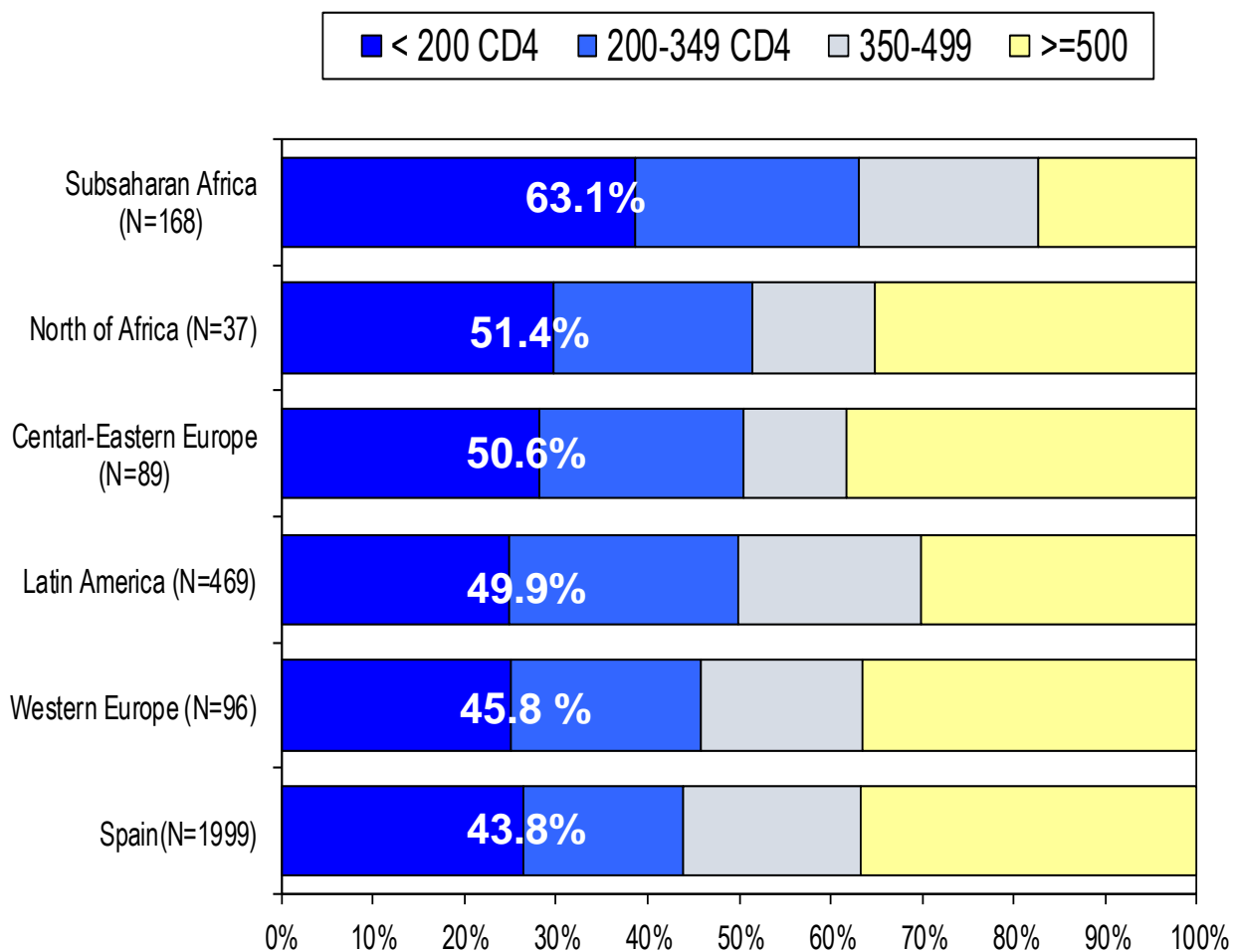


% of cases with first CD4 count <350 cels/mm<sup>3</sup>: 46.5%

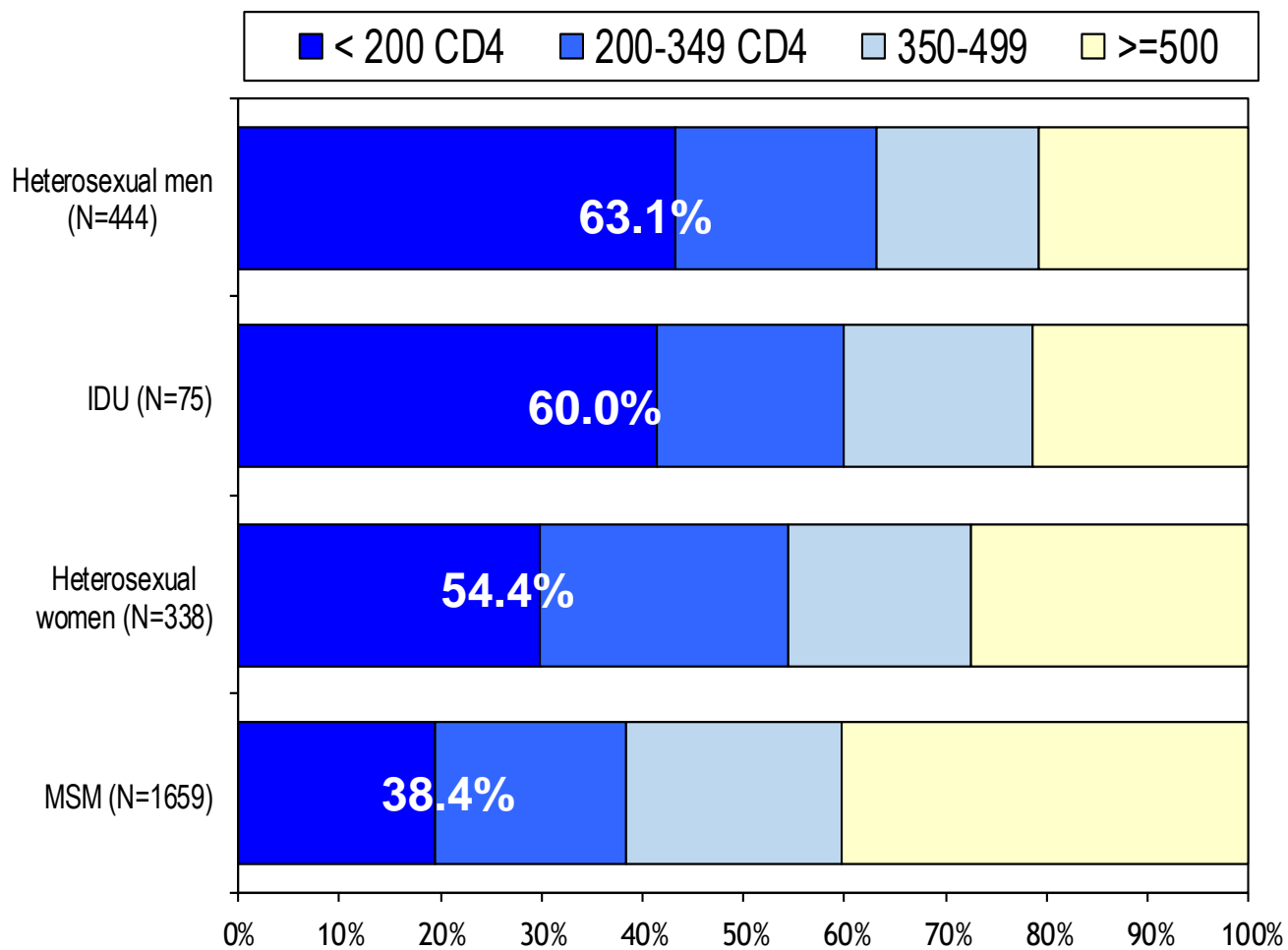
# Late presentation by age, 2015



# Late presentation by region of birth, 2015



# Late presentation by transmission mode, 2015

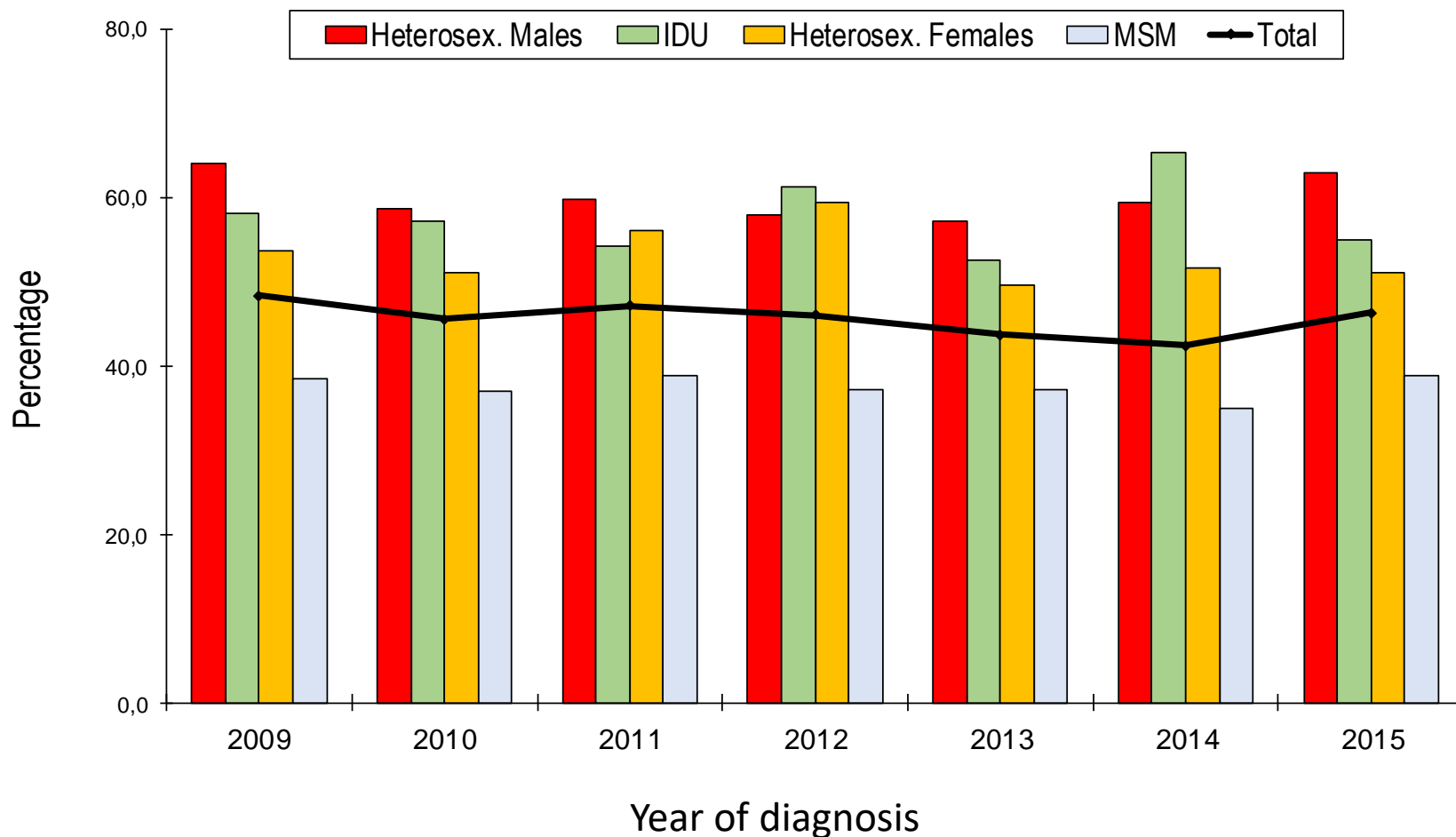


# Factors related to AD and LP in Spain

Characteristics	Advanced HIV disease (<200 cell / $\mu$ L)*		Late presentation (<350 cell / $\mu$ L)*	
	Adjusted OR	95% CI	Adjusted OR	95% CI
Sex				
Female	1		1	
<b>Male</b>	<b>1.3</b>	[1.1-1.5]	<b>1.4</b>	[1.2-1.5]
Age (years)				
0-19	0.4	[0.3-0.7]	0.5	[0.3-0.7]
20-29	1		1	
<b>30-39</b>	<b>1.7</b>	[1.5-1.9]	<b>1.4</b>	[1.2-1.5]
<b>40-49</b>	<b>2.8</b>	[2.5-3.2]	<b>2.2</b>	[2.0-2.5]
<b><math>\geq 50</math></b>	<b>4.4</b>	[3.8-5.1]	<b>3.3</b>	[2.9-3.8]
Transmission mode				
MSM	1		1	
<b>IDU</b>	<b>2.0</b>	[1.7-2.4]	<b>1.9</b>	[1.6-2.2]
<b>Hetero</b>	<b>2.4</b>	[2.1-2.7]	<b>2.1</b>	[1.9-2.4]
Region of origin				
Spain	1		1	
Western Europe	1.1	[0.9-1.3]	1.1	[0.9-1.3]
<b>Eastern Europe</b>	<b>1.7</b>	[1.3-2.1]	<b>1.3</b>	[1.1-1.7]
<b>Latin America</b>	<b>1.4</b>	[1.3-1.6]	<b>1.6</b>	[1.5-1.8]
<b>Sub-Saharan Africa</b>	<b>1.4</b>	[1.2-1.7]	<b>1.7</b>	[1.5-2.0]
<b>North Africa</b>	<b>1.6</b>	[1.1-2.4]	<b>1.5</b>	[1.0-2.1]

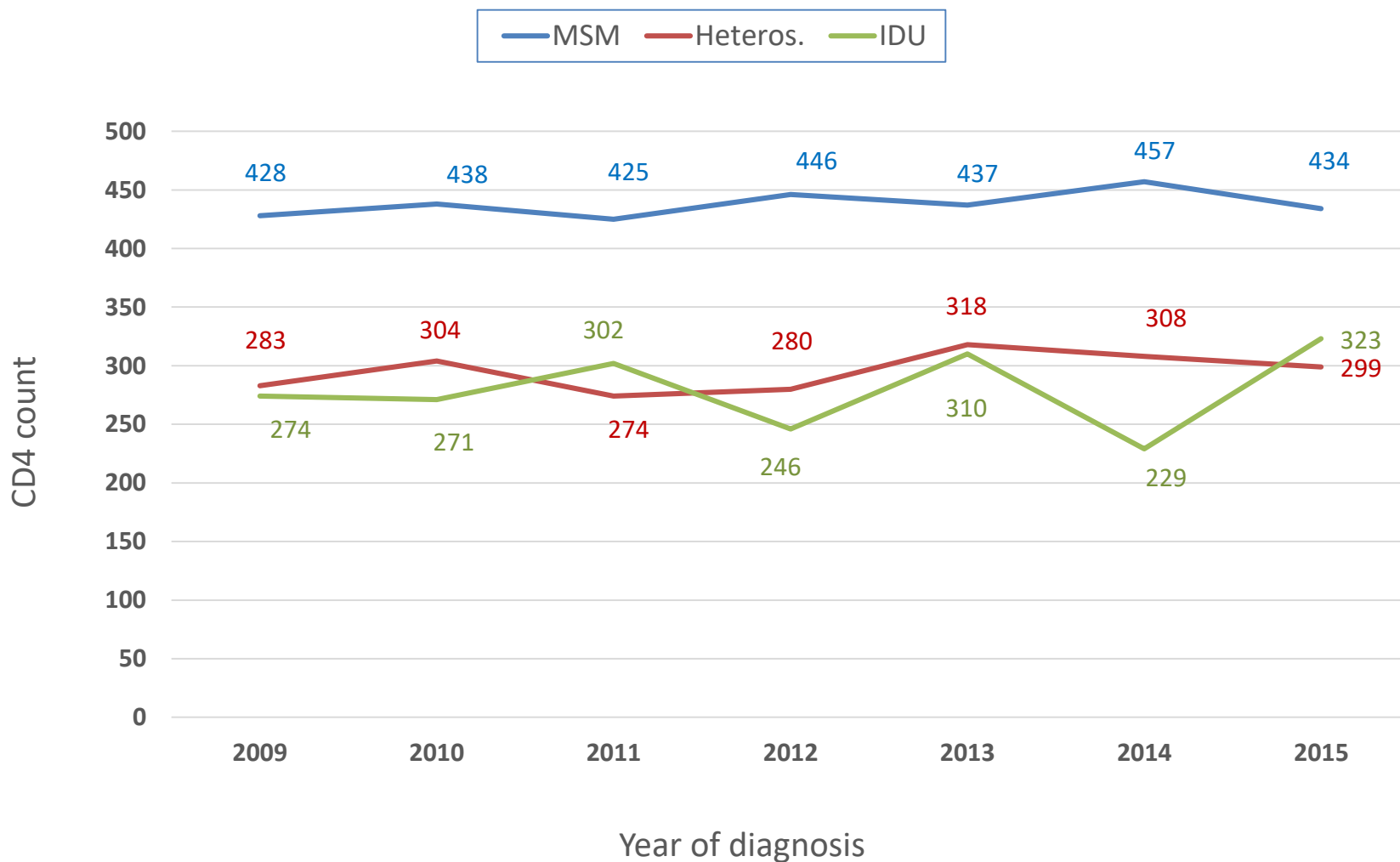
Model adjusted by year of diagnosis

# Late presentation (<350 CD4) by transmission mode, 2009-2015

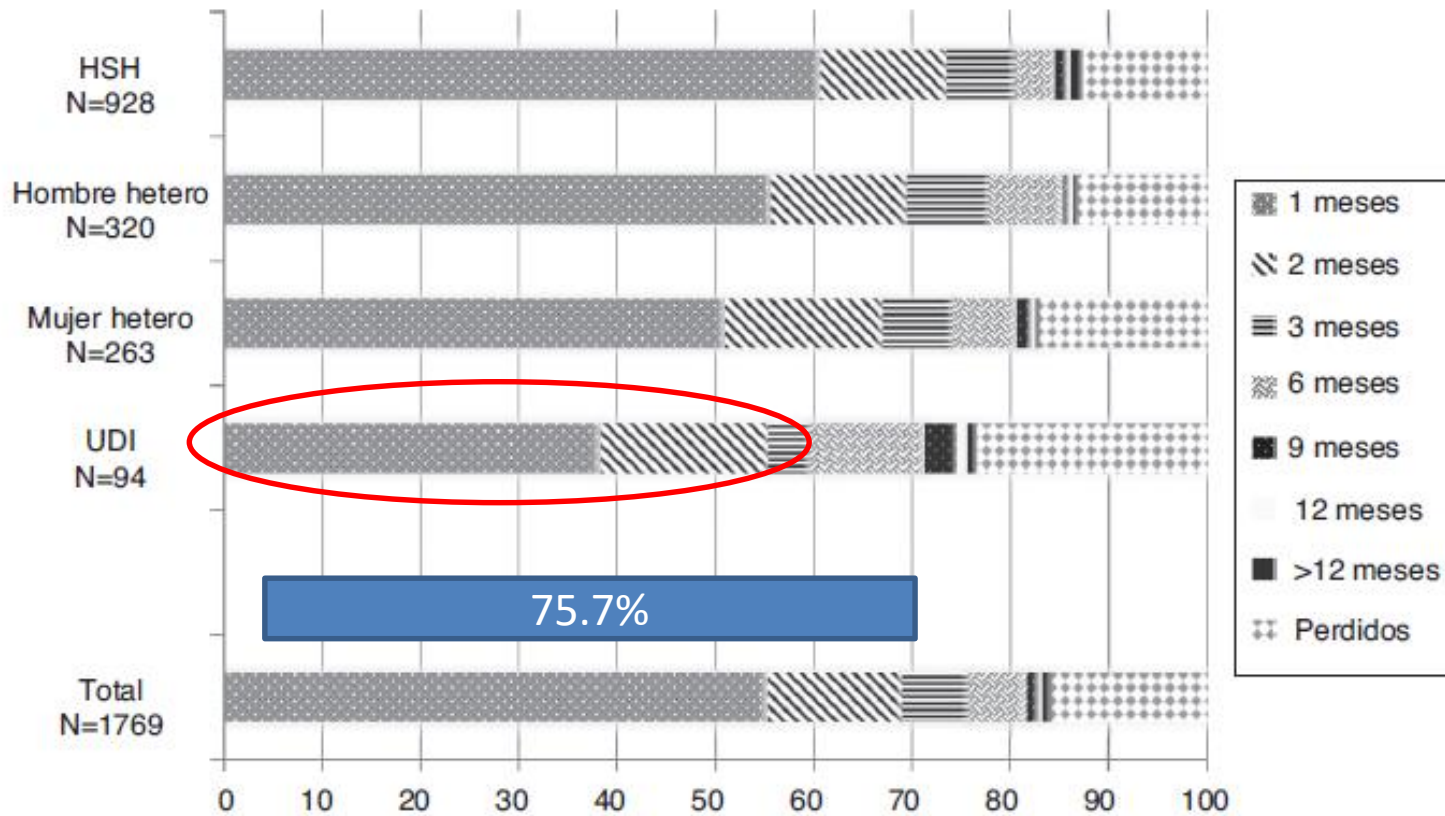




# Median CD4 count at HIV diagnosis by transmission mode, 2009-2015



# Linkage to care



# In summary, in Spain...

- ✘ HIV is a concentrated epidemic, with several sub-epidemics
- ✘ Rate of new HIV diagnoses is similar to other EU countries
- ✘ Main transmission route: sexual contact
- ✘ Incidence of new HIV diagnoses decreasing in all groups, except MSM
- ✘ High percentage of late diagnosis, with different magnitude by transmission mode but same trends
- ✘ Linkage to care after HIV diagnosis is good, but it is needed to improve among IDU

**DÍA MUNDIAL DEL SIDA**  
1 DE DICIEMBRE DE 2016

ONUSIDA

**LEVANTEMOS LAS MANOS POR LA #PREVENCIÓNVIH**

Hand messages:  
Derechos  
Usa preservativo  
Cero discriminación  
Hazte la prueba  
Tratamiento precoz  
Cuida tu salud, protégete  
#PREVENCIÓNVIH

COBRADO DE GEMMA MINISTRO DE SANIDAD, POLÍTICA SOCIAL Y CALIDAD

Thanks for your attention